



ARE YOU LOOKING TO BE A PART OF SOMETHING GREATER?  
 SIGMA GAMMA RHO SORORITY, INC.  
 NU XI SIGMA CHAPTER  
*Affiliates*



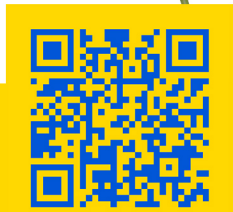
**Rhosebud Vision:** To equip, engage and enhance young girls functioning; preparing them to be more confident, academically stronger and social-emotionally prepared to positively impact their world.

**Eligibility Criteria: Girls Ages 8-11**

Exhibit good standards of character and conduct

**What We Do:**

- Cultivate well-rounded girls
- Develop skills to be good students and productive citizens
- Talent Development
- Develop Social Skills
- Develop Effective Communication Skills



**Rhoer Club Vision:** To develop leadership skills, to teach Rhoers to find and own their voice, thereby empowering these young ladies to take up space in this world and use their voice.

**Eligibility Criteria: Girls Ages 12-18** with high scholastic achievement

**What We Do:**

- Leadership Training & Development
- Talent Development
- Career Preparation
- Life Skill Development
- Enhance Social Skills
- Developing Healthy Relationships
- Civic Engagement



**Philo Affiliate:**

Motto: Providing Friendship & Support.  
 Established in 1943.

**Eligibility Criteria: Women Age 18+**  
 Non-Degreed, Minimum—High School diploma or its equivalent  
 High Moral Character

**What We Do:**

- Support the 5 Essential Programs of Sigma Gamma Rho Sorority, Inc.
- Engage in Philanthropic Endeavors to Empower Communities
- Civic & Social Engagement
- Leadership Development
- Networking Skills
- Professional Development Opportunities



*contact us*

www.nuxisigma1922.org | info@nuxisigma1922.org | @nuxisigma